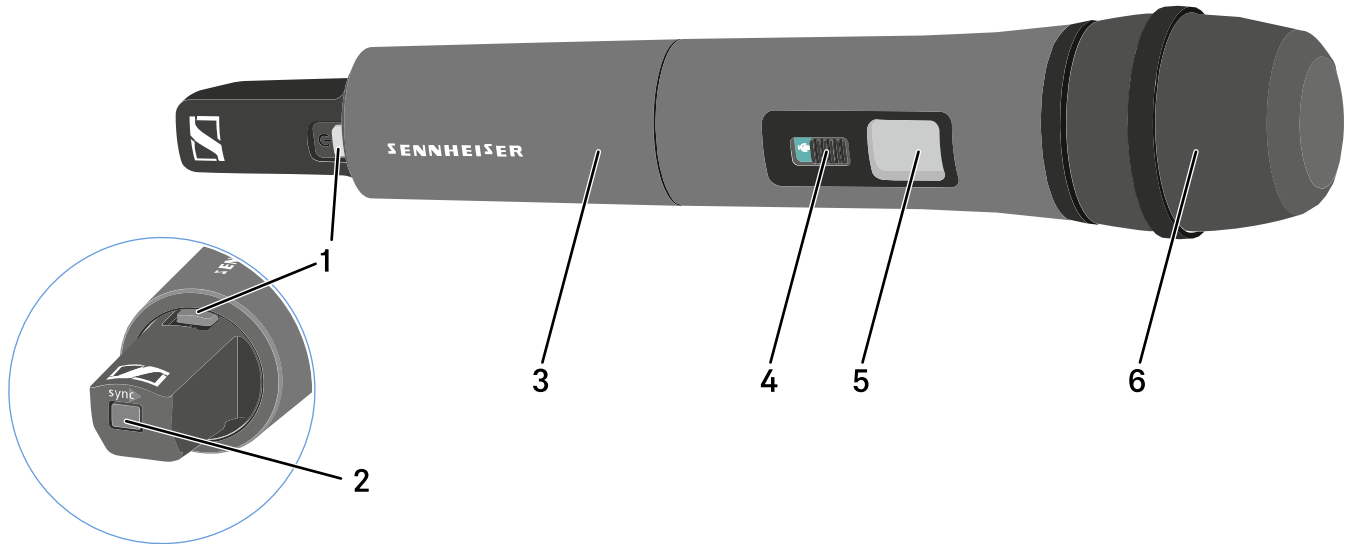




Handheld transmitters SKM 825-XSW | SKM 835-XSW | SKM 865-XSW

Product overview



1 ON/OFF button with LED

- See „Switching the handheld transmitter on and off“
- Green: the radio link is established
- Flashing red/green: pairing active (see „Establishing a radio link | Synchronizing the receiver and transmitter“)
- Flashing red: low battery (see „Inserting and removing the batteries“)

2 SYNC button

- See „Establishing a radio link | Synchronizing the receiver and transmitter“

3 Unscrewable cover for accessing the battery compartment and **Sensitivity** switch

- See „Inserting and removing the batteries“
- See „Setting the input sensitivity“

4 Mute switch

- See „Muting the handheld transmitter“

5 Display panel

- See „Information on the handheld transmitter’s display“

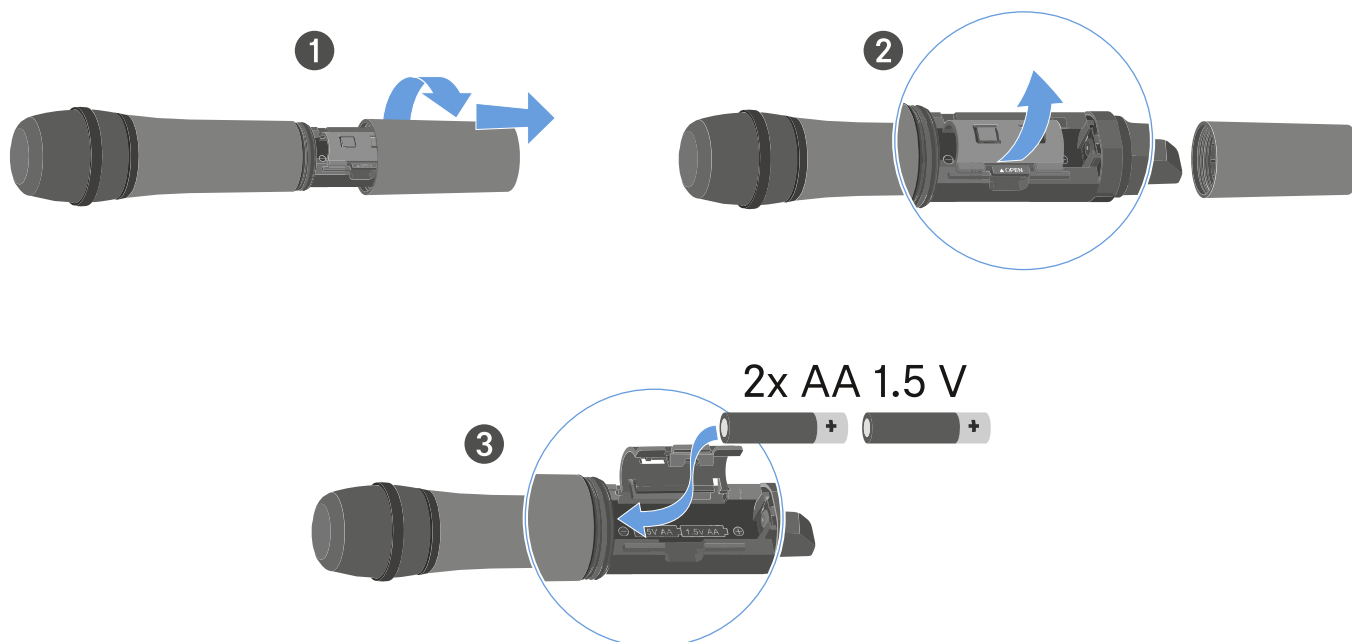
6 Microphone module

- With capsule 825, 835 or 865



Inserting and removing the batteries

You need two AA 1.5 V batteries to operate the handheld transmitter.

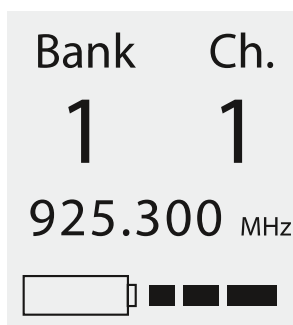


- ▷ Unscrew the microphone housing as shown in the figure and pull it downward.
- ▷ Insert the batteries as indicated in the battery compartment. Observe correct polarity.
- ▷ Screw the microphone housing back on.



Battery status

Battery charge status in the display:



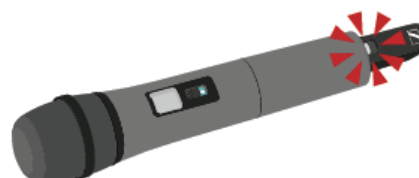
	~ 10 h
	~ 7 h
	~ 3 h
	Low Batt

Charge status is critical (LOW BATT):

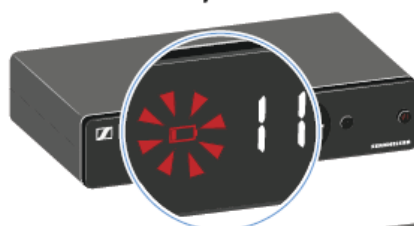
SK-XSW



SKM-XSW



EM-XSW 1 /EM-XSW 1 DUAL



EM-XSW 2

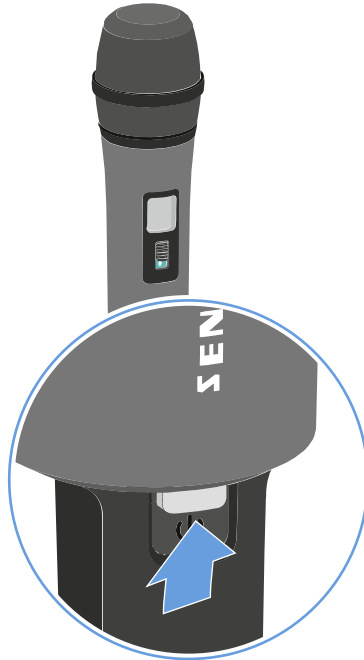




Switching the handheld transmitter on and off

To switch the handheld transmitter on:

- ▷ Short-press the **ON/OFF** button.
The transmitter switches on. The **ON/OFF** button lights up.



To switch the handheld transmitter off:

- ▷ Hold down the **ON/OFF** button until the light in the **ON/OFF** button disappears.

Establishing a connection to the receiver

To establish a radio link between the transmitter and the receiver, the devices must be synchronized.

See „Establishing a radio link | Synchronizing the receiver and transmitter“.



Conditions and restrictions for using frequencies

There may be special conditions and restrictions for using frequencies in your country.

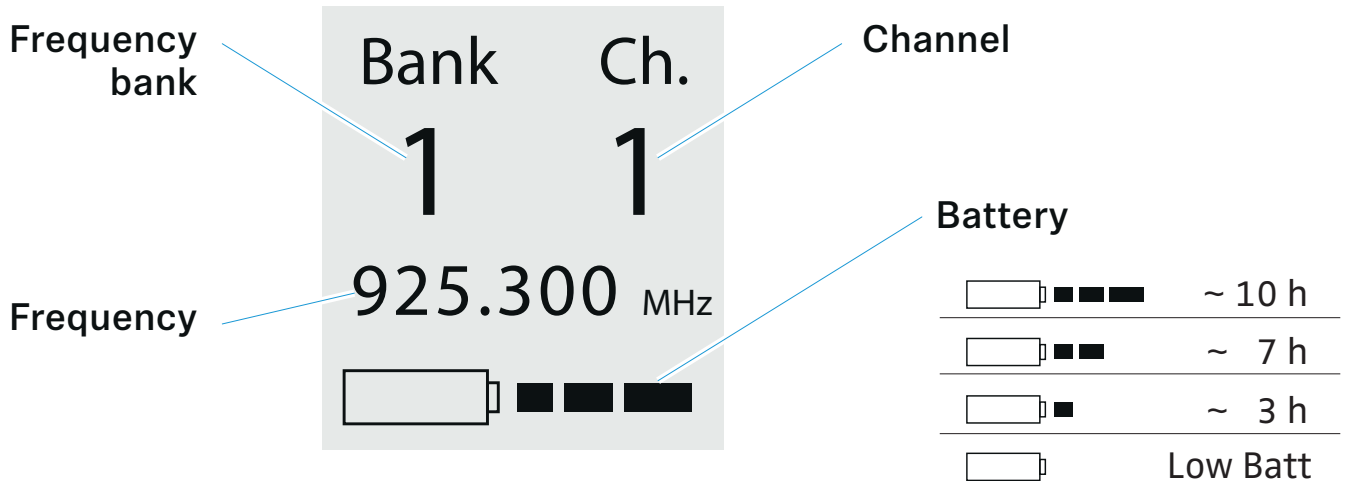
Before putting the product into operation, find the information for your country at the following address:

www.sennheiser.com/sifa



Information on the handheld transmitter's display

You can view the following information on the transmitter display.



Further information

Frequency bank / Channel / Frequency:

- EM-XSW 1: „Setting the frequency automatically (AUTO SCAN)“ | „Setting the frequency manually“
- EM-XSW 1 DUAL: „Setting the frequency automatically (AUTO SCAN)“ | „Setting the frequency manually“
- EM-XSW 2: „SCAN menu item“ | „PRESET menu item“ | „TUNE menu item“

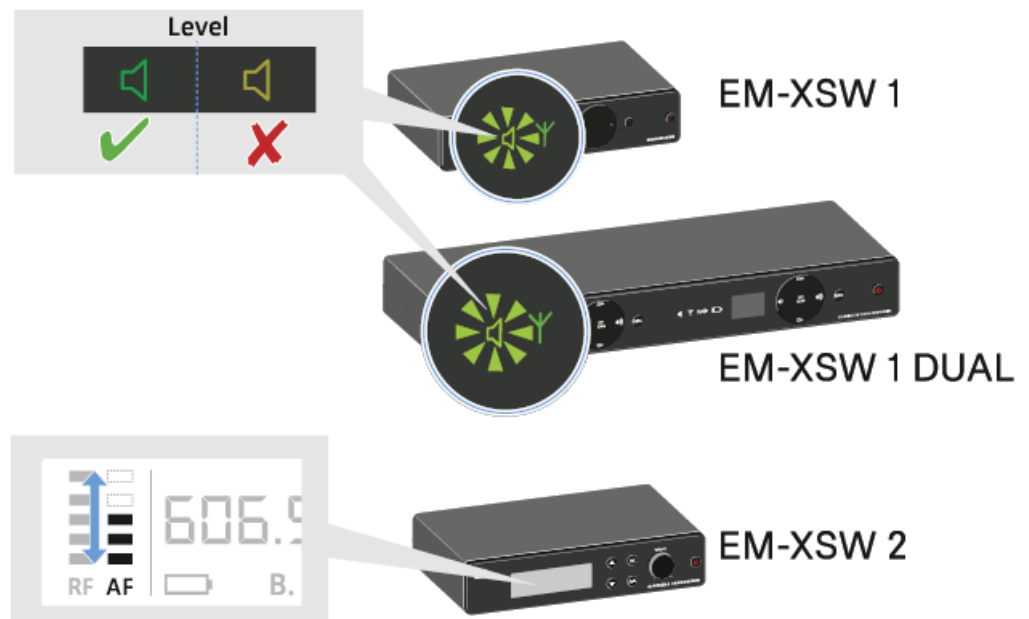
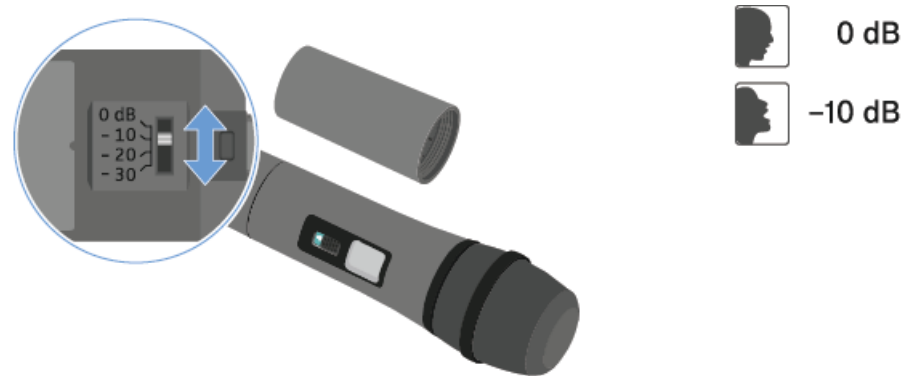
Battery:

- „Inserting and removing the batteries“



Setting the input sensitivity

Use the **Sensitivity** switch to adjust the level of the audio signal sent to the receiver.



- Unscrew the microphone housing and pull it downward.
- Adjust the input sensitivity using the **Sensitivity** switch.
- Pay attention to the level indicator on the receiver display.